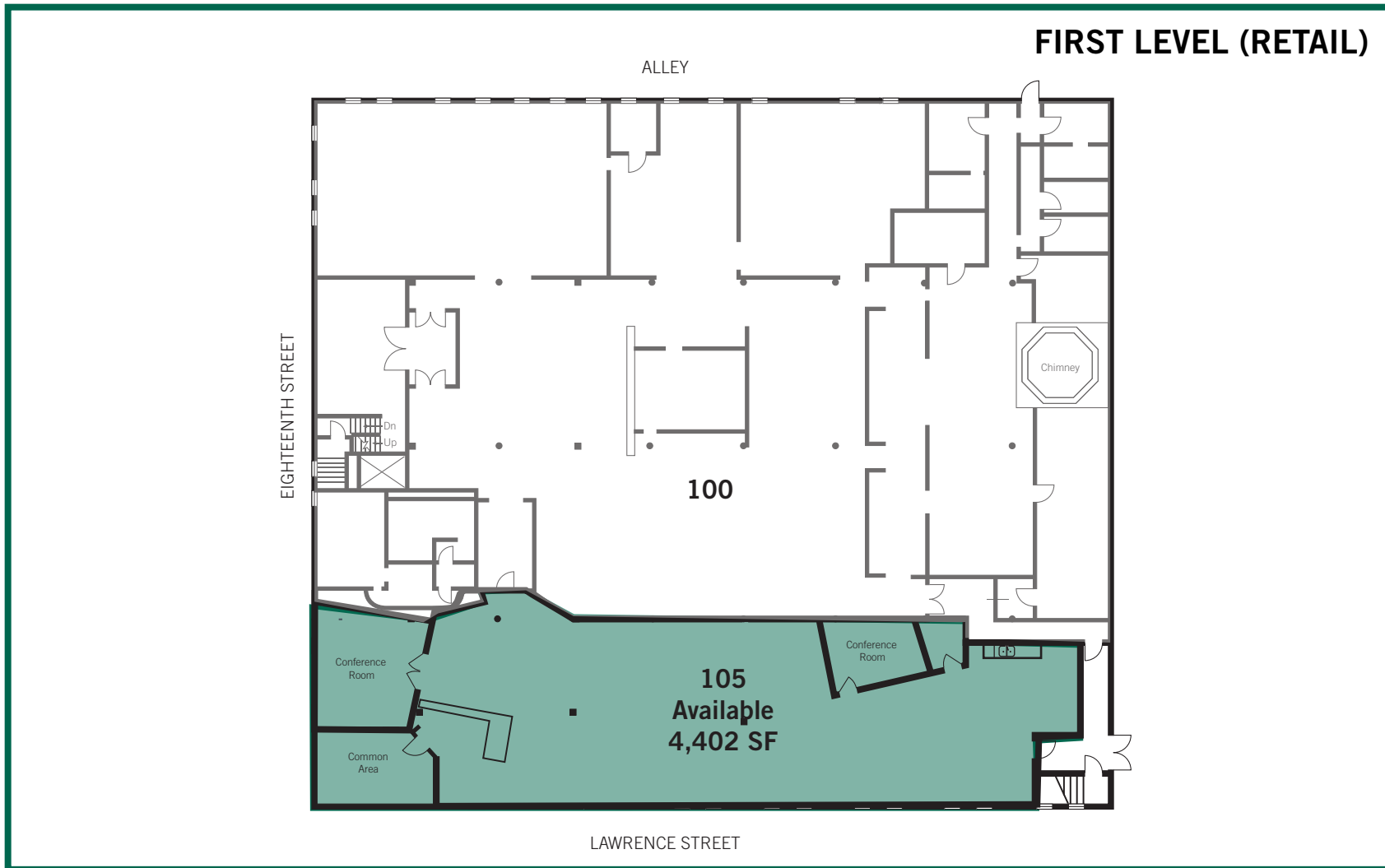


Denver Cable Building | 1801 Lawrence Street, Denver, CO

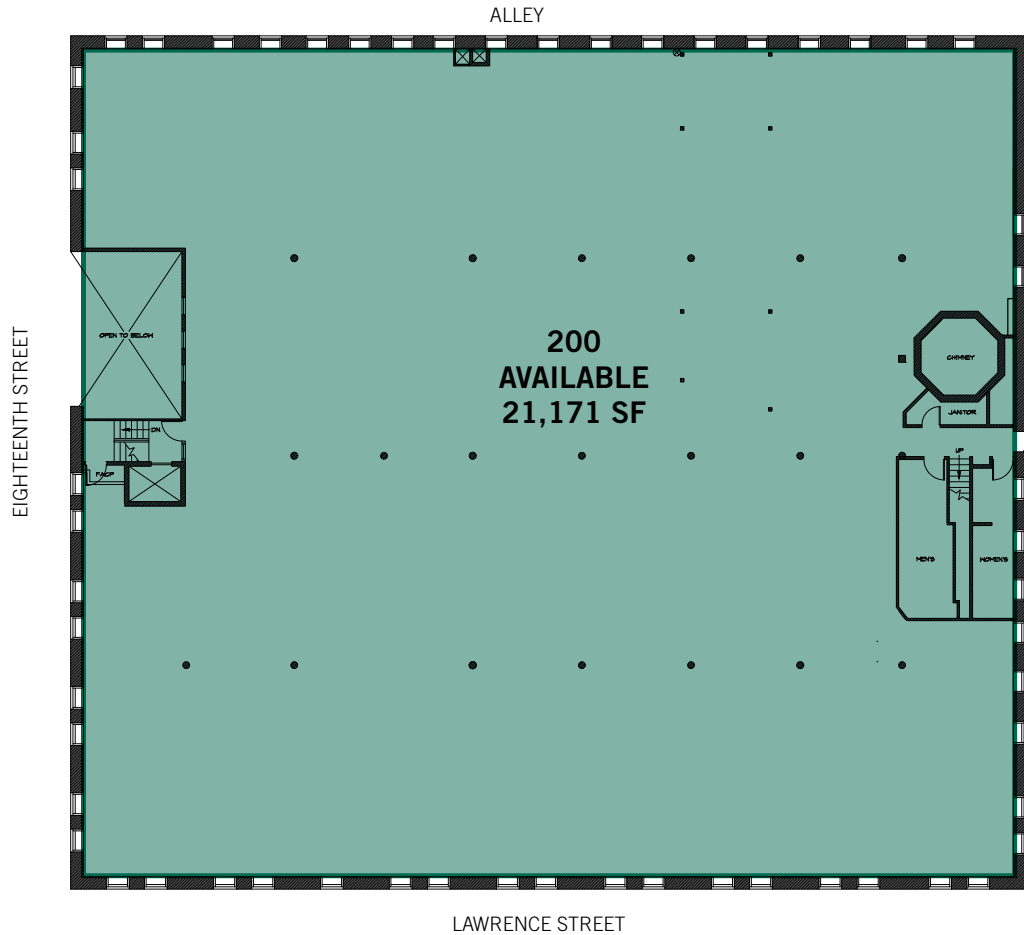


BUILDING DETAILS

| Property Overview | |
|-------------------|-------------------|
| Total GLA | 37,521 sq. ft. |
| Stories | 2 |
| Parking | 60 Covered Spaces |
| Space Available | |
| Suite 105 | 4,402 sq. ft. |
| Suite 200 | 21,171 sq. ft. |

Denver Cable Building | 1801 Lawrence Street, Denver, CO

SECOND LEVEL (OFFICE)



BUILDING DETAILS

Property Overview

| | |
|------------------|-------------------|
| Total GLA | 37,521 sq. ft. |
| Stories | 2 |
| Parking | 60 Covered Spaces |

Space Available

| | |
|------------------|----------------|
| Suite 105 | 4,402 sq. ft. |
| Suite 200 | 21,171 sq. ft. |

- Leased
- Vacant